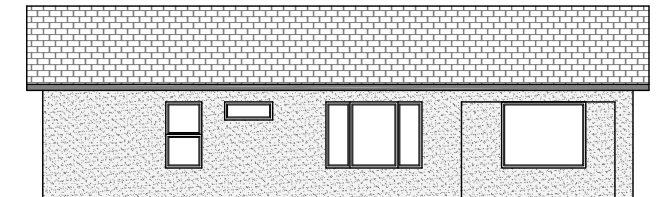
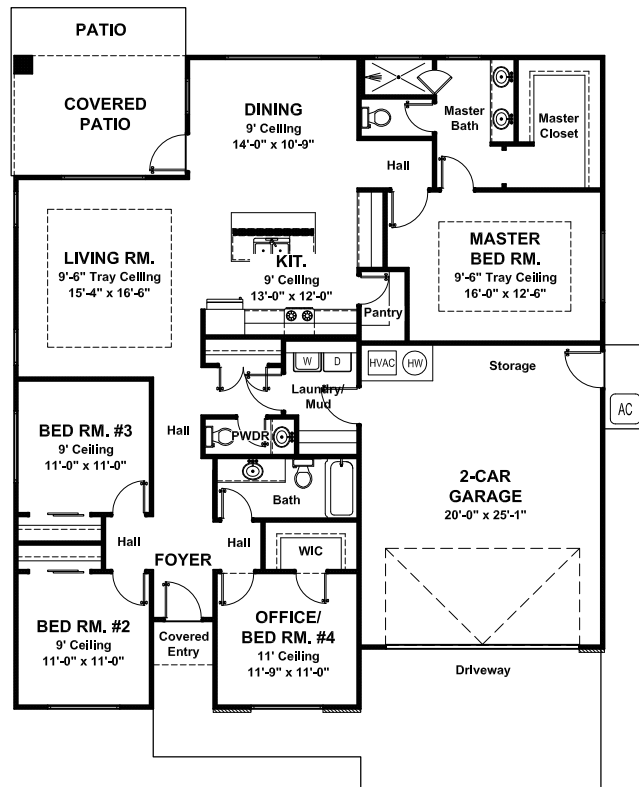




Living Area = 1,880 Sq. Ft.
Garage = 514 Sq. Ft.
Covered Entry = 18 Sq. Ft.
Covered Patio = 143 Sq Ft.
Dimensions = 49'-2" (w) x 54'-5" (d)
FNDN: Slab Exterior Walls: 2x4

Style: Modern - 4 Bedroom - 2.5 Bath - 2 Car Garage

This spacious modern home has a compact footprint, having 4 bedrooms in just 1,880 sq. ft. With opposite facing shed roofs this facade is asymmetrically balanced. The multiple ceiling heights provide interesting accents with lots of variety. A 2-car garage with storage, space for a mud room and large covered patio complete this amazing design. Rest easy in this roomy and luxurious plan.



Back Elevation